



# Refugees/Migrants Emergency Response - Mediterranean

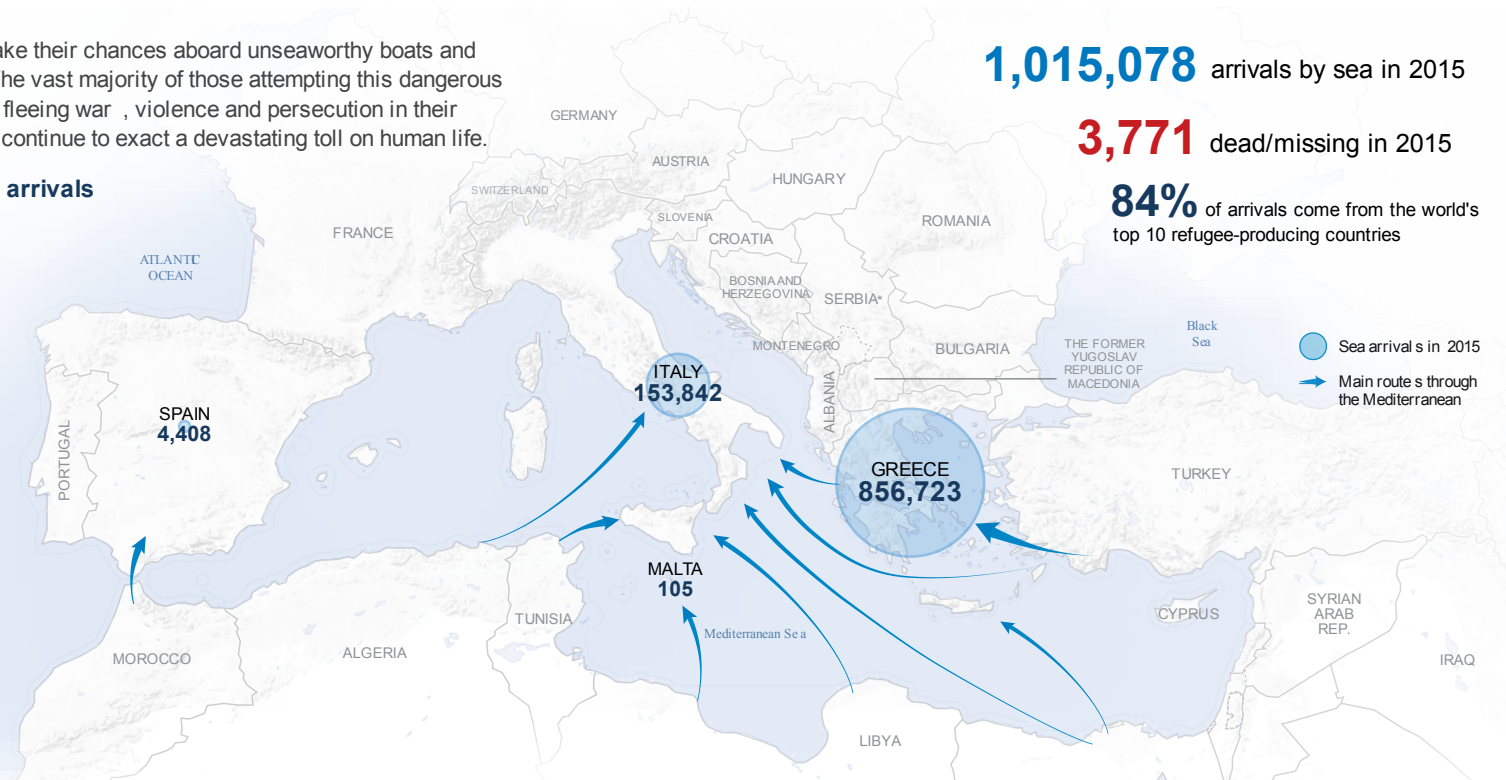
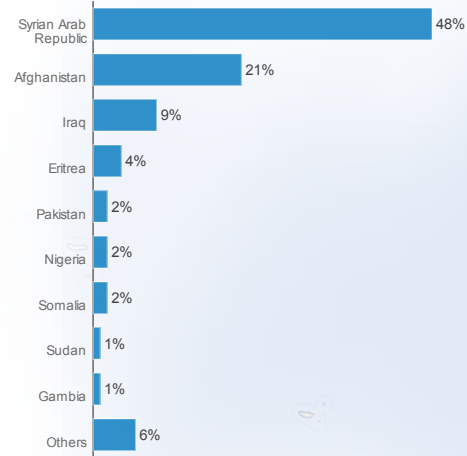
1 August 2016

<http://data.unhcr.org/mediterranean>

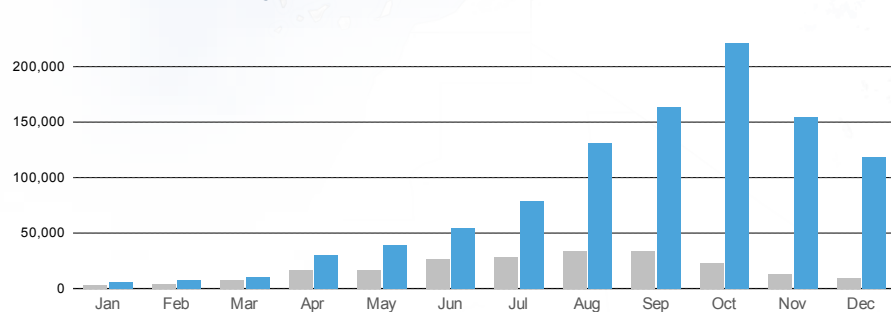
Increasing numbers of refugees and migrants take their chances aboard unseaworthy boats and dinghies in a desperate bid to reach Europe. The vast majority of those attempting this dangerous crossing are in need of international protection, fleeing war, violence and persecution in their country of origin. Every year these movements continue to exact a devastating toll on human life.

## Top-10 nationalities of Mediterranean sea arrivals

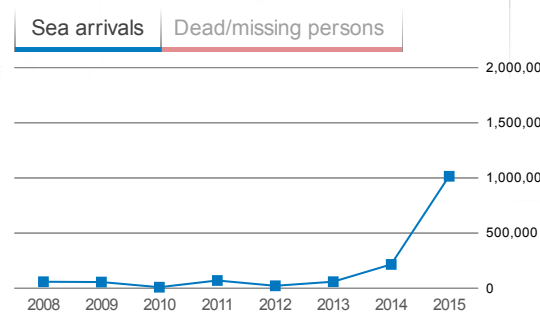
Top-10 nationalities represent **96%** of the sea arrivals based on arrivals since 1 Jan 2015



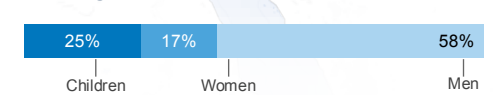
## Comparison of monthly Mediterranean sea arrivals



## Evolution - Mediterranean Sea



## Demographics based on arrivals since 1 Jan 2015



\*Serbia (AND KOSOVSVO: S/RES/1244 (1999) ) [Download excel data](#)  
 The boundaries and names shown and the designations used on this map do not imply official endorsement or acceptance by the United Nations